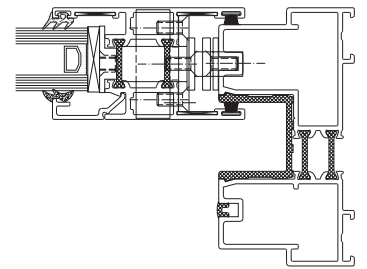


# DOORS

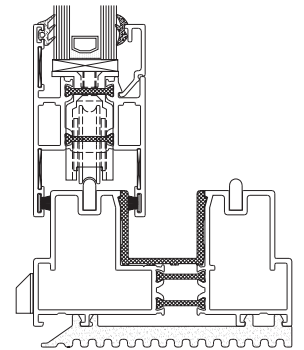
## Visoglide



Horizontal Section



Vertical Section



### Trade Name

## Visoglide

### Building applications

Designed for use as fixed lights and horizontal sliding doors internally beaded for domestic and all commercial applications

### Special features

Weight limit 200Kg. Height limit 2550mm  
2, 3, 4 and 6 door panels available  
All applications are internally glazed with square beads  
Polyamide thermal break allowing dual colour option

### Materials

Aluminium alloy 6060/6063 T5/T6 in condition F22 to NBN P21-001 and DIN 1725

Thermal break: polyamide strips PA 6.6. 25% reinforced with glass fibre

Glazing seals: EPDM to DIN 7863, TV 110 NFP 85301, ISO 3994

Weatherseals: Woolpile

### Finish

Polyester powder coat to BS 6496/APA-Qualicoat Guidelines. Anodised satin or bronze colours with EWAA/EURAS-Qualinod quality label  
Dual colour available

### Profile width

Head, cill and jamb 116mm  
Mullion 83mm and bi-parting stiles 158mm

### Depth of frame

Two track 99mm and three track 155mm

### Glass

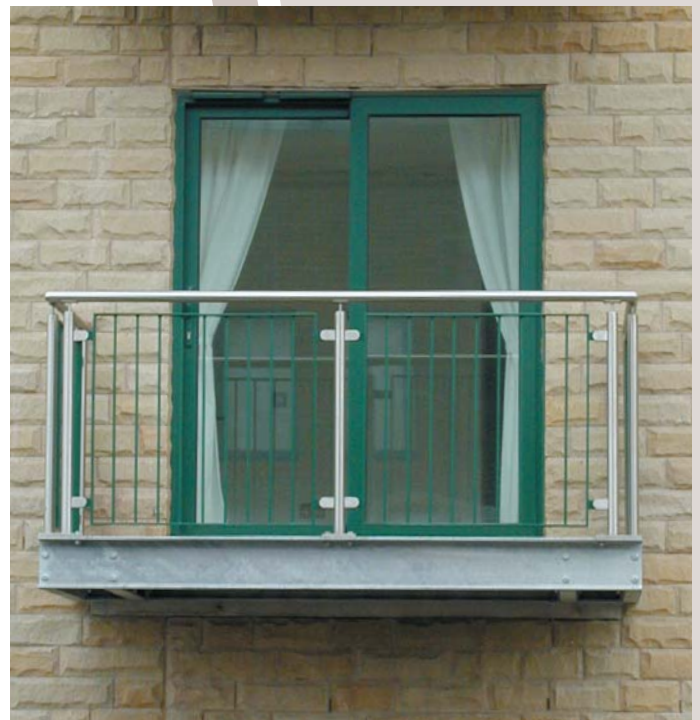
Glazing options from 4mm to 28mm

### Sash inserts

Fixed lights and horizontal sliding panels

### Performance

Weather tested in accordance with BS6375 Pts 1  
Tested to NEN-norm 5096. Security tested by SKG  
Complies with Doc. L for thermal transmittance  
Test Reports are available on request





Our Visofold folding doors are constructed from profiles with a thermal break. Robust sections enable the creation of large passage-ways providing maximum natural light and panoramic views. Moveable panels that can be folded up to the left or right sit within an outerframe. The system offers flexibility in terms of the possible combinations of folding elements and opening sashes.

This door system can be used in a variety of properties including private domestic dwellings, conservatories, hotels, restaurants and stores to open up a complete wall to create a larger space particularly advantageous in the summer.

